

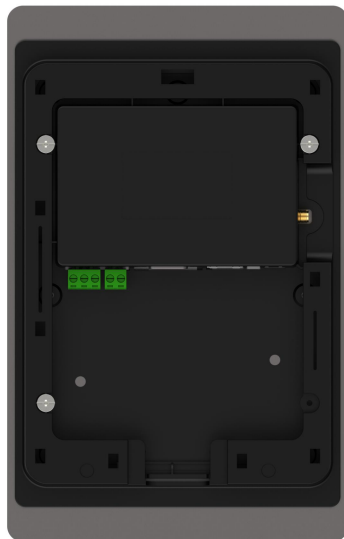
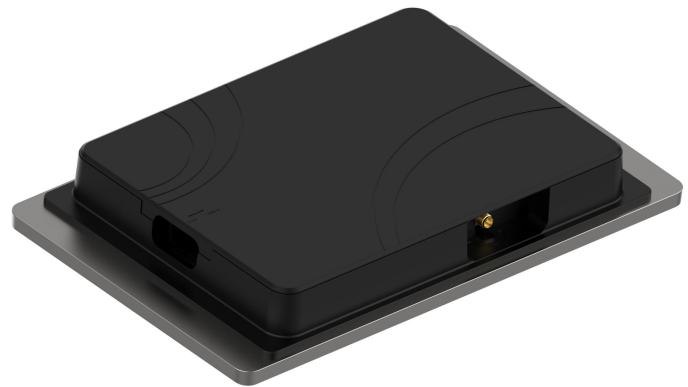
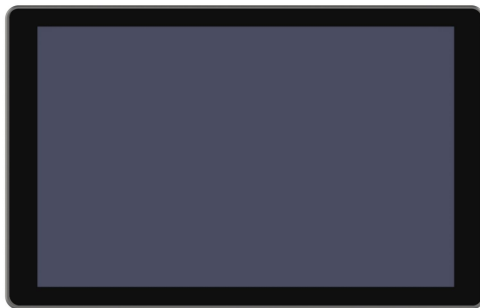
# Flexem Industrial Capacitive HMI F1 Series

Model: F110

## Products Overview

Flexem Industrial touch screen F1 series HMI, with innovative structure design, with 7inch interface hole size, to provide 10.1inch wide screen narrow frame new view experience, with beautiful outlook and compact size, it is suitable for many small and medium devices application. Magnetic front panel and fixed frame design brings convenience for the installation. With built-in IOT function, you can only choose to equip antenna and SIM card to realize devices to cloud, convenient manufacture and end user to monitor, manage and serve for devices. Stronger and faster processor platform and built-in loud-speaker to improve human machine interface media play experience.

## Products Outlook


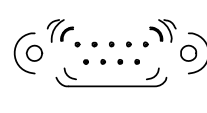





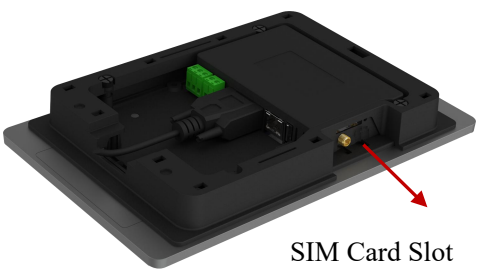
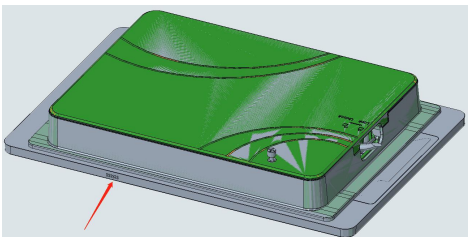
## Products Specifications

Hardware Parameters	LCD Touch Screen	10.1" 16:10 TFT LCD Touch Screen
	LCD Viewing Angle (T/B/L/R)	85'/85'/85'/85'
	Resolution	800×1280
	Color	24-bit
	Lightness	400 cd/m <sup>2</sup>
	Backlight	LED
	LCD Life	50000 hours
	Touch Screen	Capacitive touch screen
	CPU	4 core 1.2G ARM Cortex-A7processor
	Memory	4GB EMMC+256MB DDR3
	RTC	Built-in Clock
	Ethernet	1-line 10M/100M adaptable
	USB Ports	1 USB Type-C 2.0 port, 1 USB Host 2.0 port
	Program Downloading	Type-C /U-disk and Ethernet
	Serial Communication Port	COM1:RS232/RS485/RS422; COM2:RS485 COM3:RS232
	Speaker	Built-in Speaker
IOT Ethernet ACCESS	Ethernet	Ethernet
	Mobile 4G/Unicom 4G/Telecom 4G	
	Network Channel	LTE FDD: B1/B3/B5/B8 LTE TDD: B38/B39/B40/B41
Software Parameters	VPN Pass-through	Supporting
	Data Monitoring	300 and it supports regular upload or variable upload
	Alarm Push	100,it supports clients push, SMS push, wechat public NO push
	Historical Data	100, it supports offline transfer, offline each number can store 5W and it can keep for 180 days for cloud.
	Edge Computing	30, It supports script programming.
	Network Protocol	20, It supports over hundreds of industrial devices protocol.
	Managing and Maintenance	It supports remote firmware upgrading, equipping files lead in and lead out, cloud downloading of update configuration.
Electric Specifications	Rated Power	< 10W
	Rated Voltage	DC24V, working range: DC 9V~28V
	Power Protection	It is with lightening and surging protection.
	Power Loss Permit	< 5mS
	CE & RoHS	It confirms to EN61000-6-2:2005 , EN61000-6-4:2007 standard, confirms to RoHS, lightening and surging±1KV, group pulse±2KV,

		Static contact 4KV, air discharge: 8KV
Environment Specifications	Workig Temperature	-10~60°C
	Storage Temperature	-20~70°C
	Anti-ultraviolet light	Prohibits working under strong violet environment such as direct sunshine lightening.
	Environment Humidity	10~90%RH (Non-condensate)
	Anti-vibration	10~25Hz(X,Y,Z direction 2G/30 minutes)
	Cooling Way	Natural Cooling
Mechanic Parameters	Installation	Embedded Installation
	Protection Grade	Front panel confirms to IP65(It confirms to smooth cabinet installation, back cover confirms to IP20.
	Mechanic Structure	Aluminum front panel+ ABS back cover.
	Hole Size	192mm×138mm
	Machine Size	249mm×158mm×30mm
	Machine Weight	About 900g

### Wiring Denifition

Power Terminals (Pin1~3 from left to Right)		
	Pin1	FG
	Pin2	GND
	Pin3	DC24V
DB9 Serial Ports (COM1/COM3)		
	Pin1	Rx-(B) (COM1 RS422/485-)
	Pin2	RxD (COM1 RS232)
	Pin3	TxD (COM1 RS232)
	Pin4	Tx- (COM1 RS422)
	Pin5	GND
	Pin6	Rx+(A) (COM1 RS422/485+)
	Pin7	RxD (COM3 RS232)
	Pin8	TxD (COM3 RS232)
	Pin9	Tx+ (COM1 RS422)
485 Terminals(Pin1~2 from left to right)		
	Pin1	A+ (COM2 RS485)
	Pin2	B- (COM2 RS485)
Ethernet Ports		
	RJ45	It is used for setting Ethernet connecting controllers or used for

		connecting server.
USB Host		
	USB Type A	It is used for connecting U-DISC and scanner etc external services.
USB Slave		
	USB Type C	Used for program downloading and debugging.
IOT Card Connection and Cable Connections		
 SIM Card Slot 4G Antenna Connection	SIM card Slot and Antenna Connection	SIM Card Inserting Connection 4G antenna connection(equipped with FEA-YT antenna).
Speaker Built-in		
 Speaker	Speaker Built-in	Voice source: FS program vedio and audio files. Voice Control: please refer to special function register SRW10053 Voice: 0~80DB(laboratory environment).

### Size

